



EverWave Filtration *Onyx* 4-Stage UF System

Model EVW-ONX-4UF

Package Contents

(A). Four Stage Head

(B). Twist-Lock Cartridges

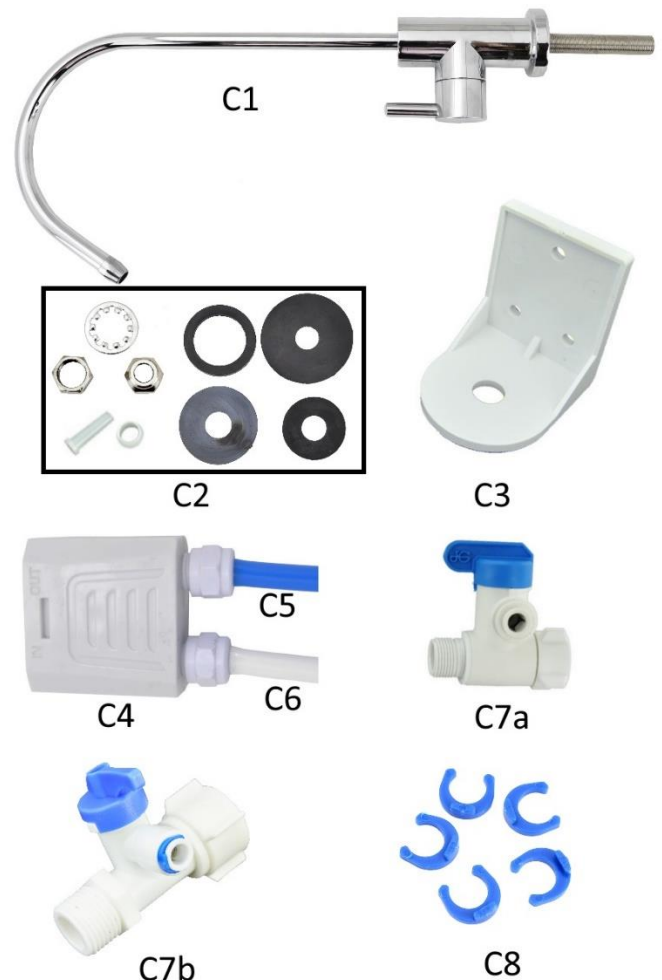
- (B1) PP Sediment Cartridge: EVW-QR-SED (RED)
- (B2) Block Carbon Cartridge: EVW-QR-BLOC (WHITE)
- (B3) UF Cartridge: EVW-QR-UF (ORANGE)
- (B4) Coconut Carbon Cartridge: EVW-QR-COCO (BLUE)

(C). Installation Kit

- (C1) Faucet with Compression Nut
- (C2) Faucet Assembly
- (C3) Faucet Mounting Bracket
- (C4) Inlet/Outlet Adapter
- (C5) Blue 1/4" Tubing – 5 ft. (OUTLET)
- (C6) White 1/4" Tubing – 5 ft. (INLET)
- (C7) Kitchen Faucet Adapter Valves (use one)
 - a. John Guest PASVPP1 (3/8")
 - b. Hydranti Adapter Valve (1/2")
- (C8) Clips for Tubing Connections

Required Tools and Materials

- Adjustable Wrench
- Tape Measure
- Safety Glasses
- Masking Tape
- Newspaper or Towels
- Bucket or Pan
- 1/8" Drill Bit
- Center Punch
- Drill with 1/4" & 9/16", or 5/8" Drill Bits
- 7/8" to 1" Philips Screw – (2) – OPTIONAL
- Philips Screwdriver – OPTIONAL
- Hollow-Wall Anchor Bolts or Toggle Bolts – OPTIONAL



Installation Instructions

Please read all instructions and precautions prior to installation and use.



CAUTION

Protect filter from freezing which can cause cracking and water leakage.

It is recommended the manifold be replaced every ten years to prevent possible water damage. Date the top of any new head to indicate the next recommended replacement date.

Precautions

- ***This filter is for cold water use only.*** Hot water will damage filter cartridges.
- After prolonged periods of non-use (i.e., vacation), including when first installed, it is recommended the filter system be flushed thoroughly (let water run for 15 minutes before using).
- These cartridges have a limited service life. Changes in taste, odor, and/or water flow indicate the filter cartridges should be replaced.



CAUTION

Before working in the cabinet area, be sure all electrical appliances and outlets are turned off at the circuit breaker.

It is recommended you wear safety glasses to protect eyes when drilling.

Before You Begin

- Install according to local plumbing codes.
- Locate the cold water pipe under your sink. Rigid pipes may require cutting in order to make adequate space to install the Kitchen Faucet Adapter Valve (C7a / C7b).
- Ensure you have all appropriate fasteners and adapters to fit your plumbing.
- Visit www.EverWaveFiltration.com for tips and installation videos!

EverWave Filtration

EverWaveFiltration.com



Step 1

Mount Auxiliary Faucet

Note: This faucet is designed to fit a 9/16" hole. Most standard sinks come with 1-3/8" or 1-1/2" diameter water sprayer holes that can be used to mount this faucet. If the pre-drilled holes cannot be used or are not in the desired position, a new hole must be drilled using either a 9/16" or 5/8" drill bit. The faucet should be positioned securely on a flat surface with adequate space for proper function.

If you need to drill a hole, start from step (1). If you will be using a pre-drilled hole, skip to step (5). If using the mounting bracket (**C3**), use 3 screws to mount the bracket to a solid surface, then skip to step (5).

1. Line sink with newspaper or towel to prevent parts and materials from falling down the drain.
2. To help prevent scratching the sink surface or countertop, apply masking tape around the area that will be drilled.
3. Mark the drill hole using a center punch or pencil.
4. Make a pilot hole using the 1/4" drill bit. Use the 9/16" or 5/8" drill bit to drill the final hole. Drill through the sink or countertop completely and smooth rough edges with a file.
5. The first rubber gasket fits right into the base of the faucet. Slide it into place, then guide the faucet stem into the hole on your counter/mounting bracket.
6. Under the counter, slide the hard plastic washer, the small rubber washer, and the metal gripping washer onto the stem in that order. Tighten it all with the securing nut.



Step 2

Install the Kitchen Faucet Adapter Valve

*Note: This kit includes two adapter valve options: one with 3/8" NPT connections (**C7a**) and one with 1/2" NPT connections (**C7b**). Depending on your undersink configuration, you may need to use a different valve.*

Method A (Stop Valve and Sink Supply Line can be Disconnected)

1. Locate the **cold water** shut-off valve under the sink. Turn off the cold water supply.
2. Turn on the kitchen faucet to release pressure and allow water to completely drain from the line.
3. Disconnect the cold water line from the 3/8" threaded stop valve under sink.
4. Holding the kitchen faucet adapter (**C7a**) in an upright position, screw onto the stop valve connection.
5. Screw the water supply hose, which leads to the sink, onto the open threaded end of the kitchen faucet adapter valve. Tighten using an adjustable wrench.

Method B (Stop Valve and Sink Supply Line are Permanently Connected)

1. Locate the **cold water** shut-off valve under the sink. Turn off the cold water supply.
2. Turn on the kitchen faucet to release pressure and allow water to completely drain from the line.
3. Disconnect the cold water supply hose from the 1/2" threaded stem on the bottom of the kitchen faucet.
4. Holding the kitchen faucet adapter valve (**C7b**) in an upright position, screw onto the threaded faucet stem.
5. Using the nut that was previously connecting the cold water line to the kitchen faucet, screw the cold water supply line to the male threads of the adapter valve. Tighten using an adjustable wrench.

Step 3 (Optional)

Mount the System Head

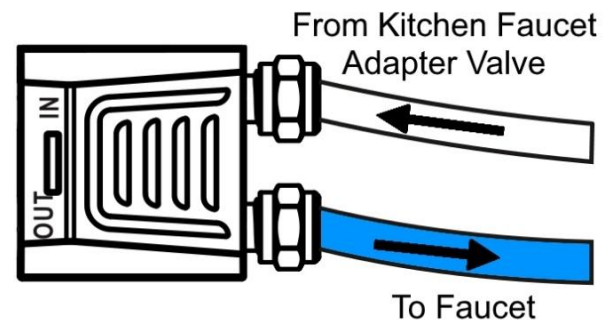
1. Select an easily accessible area under the sink to mount the filter system.
2. Use the base to hold the system by sliding the hinged bracket on the back of the system head into the base's slot.
3. For efficient tubing management, position your system as close to the cold water supply as possible.

Step 4

Connect Inlet/Outlet Adapter to System Head

Note: The Inlet/Outlet Adapter comes with tubing pre-installed. The white tubing should be in the "IN" slot and the blue tubing should be in the "OUT" slot. Check your adapter to make sure the tubing is correctly installed.

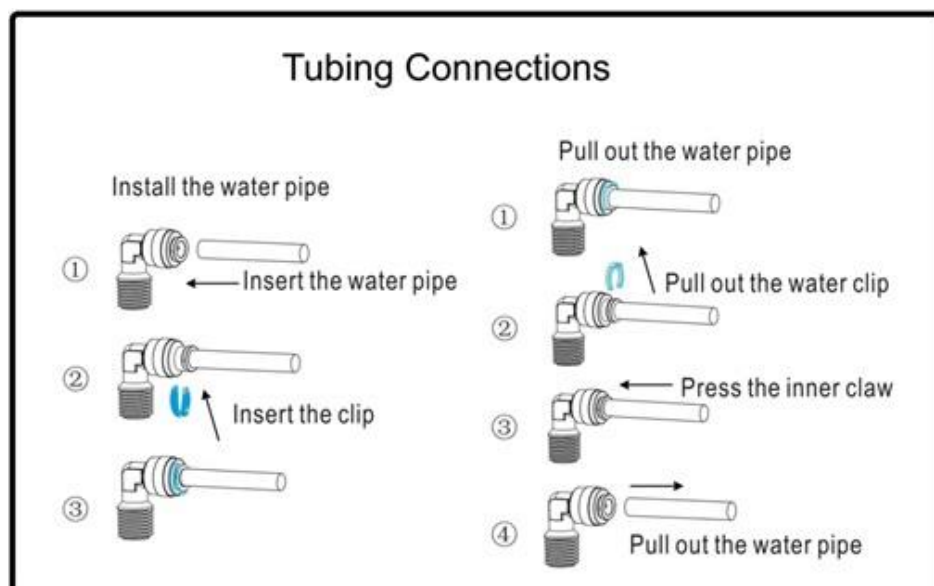
1. On the right side of the system, plug in the Inlet/Outlet Adapter (**C4**) with the inlet side up and the outlet side down (or white tubing up, blue tubing down).
2. This adapter will allow water to enter and exit the system properly and efficiently.



Step 5

Install Plastic Tubing for Water Supply Line from Inlet/Outlet Adapter to Kitchen Faucet Adapter Valve

1. Determine the length of white tubing (**C6**) necessary to connect the system head inlet to the kitchen faucet adapter making sure to allow enough tubing to prevent kinking in the line.
2. Cut the tubing squarely the end not connected to the end not already attached to the inlet/outlet adapter. Use a tubing cutter to ensure a square cut.
3. Without bending or crimping the tubing, wet the free end of the tubing with water and push it into the kitchen faucet adapter valve approximately 5/8" until it stops.
4. Prevent tubing from coming loose from fittings by inserting a clip (**C8**) as shown in the illustration below. (Elbow fitting in image not included.)



Step 6

Install Plastic Tubing for Water Supply Line from Inlet/Outlet Adapter to Faucet

1. Determine the length of blue tubing (**C5**) necessary to connect the inlet/outlet adapter to the threaded faucet stem making sure to allow enough tubing to prevent kinking in the line.
2. Cut the tubing squarely on the open end. Use a tubing cutter to ensure a square cut.
3. Gently slide the compression nut along the tubing. Press the plastic ferrule into the blue tubing fully. The plastic compression sleeve goes over the tubing, between the compression nut and faucet stem.
4. Firmly push the tubing into the end of the threaded faucet stem, hand-tightening the plastic compression nut onto the threads. Tighten approximately ½ turn with an adjustable wrench.



Step 7

Install Twist-Lock Filters

Note: When viewing the system from the front, cartridge B1 (RED) should be positioned on the far left, followed by cartridges B2 (WHITE), B3 (ORANGE), and B4 (BLUE) from right to left. The furthest right cartridge should be B4 (BLUE).

1. Use the hinged mount to insert the cartridges at a convenient angle.
2. Hold cartridge under the appropriate part of the head with the label facing left.
3. Lift each cartridge straight into the system head until the two extended flanges on top of cartridge are fully engaged into the system head.
4. Turn the cartridge counter-clockwise until it stops.
5. Repeat 2-4 for each cartridge.

Step 8

Test the Filter System for Proper Operation

1. Turn on the cold water shut-off valve under the sink.
2. Turn on the new faucet for filtered water. Allow the water to run for approximately 15 minutes in order for the filter system to flush out any air and carbon fines (fine black powder from each cartridge).
3. Check for any leaks between the system head assembly and filters, on kitchen faucet adapter connection, around all fittings and on faucet/tubing connection.

Troubleshooting

Problem	Cause	Solution
No product water	Filter cartridge clogging	Replace the cartridge
	Feed Water Valve is closed	Open the Feed Water valve
	Running Water is closed	Open the running water
Leaks	Pipe not connected tightly	Tighten the fitting

Cartridge Replacement

1. Turn off the cold water shut-off valve to the filter system.
2. Place a bucket or pan under the filter system to catch any water drips.
3. Turn each cartridge clockwise until it releases. Gently pull each cartridge down to remove from the system head. Discard the used cartridges.
4. Repeat **Step 7**.
5. Turn on the cold water shut-off valve and the faucet for filtered water. Check for leaks. If there are leaks, see **Step 8**.
6. To flush out any air and carbon fines (fine black powder), flush water through the faucet for filtered water for approximately 10 minutes.



SAFETY & HAZARD WARNINGS

- Do not use with water that is microbiologically unsafe or of unknown quality without adequate disinfection before or after the system. Systems certified for cyst reduction may be used on disinfected waters that may contain filterable cysts.
- This unit is not designed to filter sulfur (rotten egg odor).
- Please comply with all state and local regulations regarding the installation of water treatment devices.
- The contaminants or other substances reduced by the water filter

Operation & Maintenance Data

These units are intended for non-commercial use. They should be used only in ambient air temperature of between 35°F/2°C and 100°F/38°C.

Avoid placement of these units in direct sunlight or use of electrical equipment on these units. Cartridges can last up to 12 months depending on water quality and usage. Cartridges should be changed when water pressure decreases or chlorine odor intensifies.